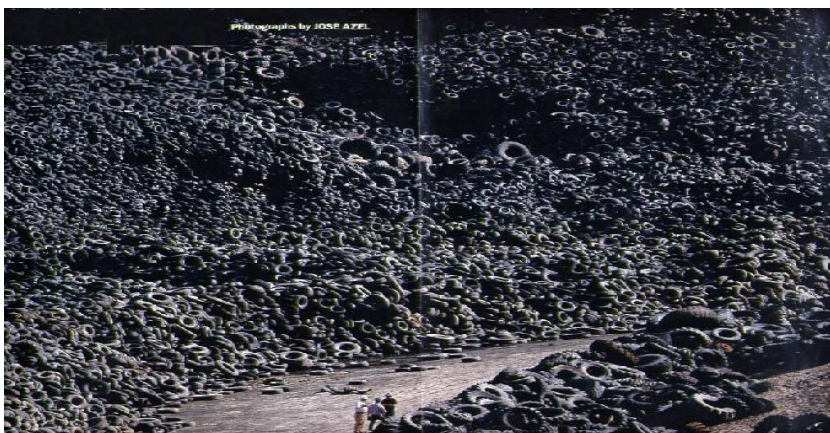


TIRE FACTS



- ♻️ Number of scrap tires generated annually in the United States (2000): **273 Million**
- ♻️ Approximate weight of these scrap tires: **3.6 Million Tons**
- ♻️ Percentage of total solid wastes generated (2000): **1.8%**
- ♻️ Number of scrap tires going to a market (2000): **196 Million**
- ♻️ Number of scrap tire processing facilities: **498**
- ♻️ Number of scrap tires used for fuel (2000): **125 Million**
- ♻️ Number of facilities using tire-derived fuel (1998): **72**
- ♻️ Scrap tires used in civil engineering applications (2000): **30 Million**
- ♻️ Number of scrap tires exported (2000): **15 Million**
- ♻️ Scrap tires processed into ground rubber (2000): **18 Million**
- ♻️ Scrap tires punched/stamped into new products (2000): **8 Million**
- ♻️ Number of states with scrap tire legislation/regulations: **48**
- ♻️ Average weight of a passenger car scrap tire: **20 pounds**
- ♻️ Number of states that ban whole tires from landfill: **33**
- ♻️ Number of states that ban all scrap tires from landfills: **12**
- ♻️ Number of states with no landfill restrictions: **5**
- ♻️ Number of states with a fee: **30**
- ♻️ States that allow Monofills (a landfill that only collection tires): **7**
- ♻️ Percentage of scrap tires that are passenger car tires: **84%**
- ♻️ Percentage of scrap tires that are from light and heavy trucks: **15%**
- ♻️ Percentage of heavy equipment, aircraft and heavy trucks: **1%**
- ♻️ Range of weight for truck tires: **40 Pounds to 10,000 Pounds**
- ♻️ Amount of steel in a steel belted radial passenger car tires: **2.5 Pounds**
- ♻️ Oil (equivalency) in a passenger car tire: **7 Gallons**
- ♻️ Number of passenger car tires to equal one ton: **100**
- ♻️ Specific gravity of tire rubber: **1.15**
- ♻️ Number of polymers (rubber) used in tire construction: **3 – 4**
- ♻️ Number of new products that contain recyclable tire rubber: **110 and counting**
- ♻️ Fastest growing new markets: **Playground cover, Soil amendments and flooring/matting**

**Provided by the Scrap Tire Management Council*