



Wayne County's Guide to Household Recycling

RECYCLING DISTRICT

Keep Bin Items **CLEAN, DRY, & EMPTY** | See page 4 for details



We are committed to offering you exceptional service while ensuring that recycling remains accessible and user-friendly.

timetorecycle.org • 1-800-678-9839



Printed on 33% Recycled Paper

Table of Contents

3 Executive Director's Letter

4 Household Recycling Done Right

6 More on Plastic Recycling

7 Tire Recycling

8 The Canton Recycle Center -
Make Your Appointment Today

9 Canton Recycle Center -
Acceptable Materials

12 Hard-to-Recycle Materials

14 What to Do With Yard Waste

15 Recycling Drop-Off Sites


16 Board of Directors

District Social Media

 @ stwrecyclingdistrict

 @ stwrecyclingdistrict

 @ STW Solid Waste District

 @ stark-tuscarawas-wayne
recycling district

Executive Director's Letter

Dear Valued Resident,

At the Stark Tuscarawas Wayne (STW) Recycling District, our unwavering commitment is to offer you exceptional service while ensuring that recycling remains accessible and user-friendly. Throughout the year, we are dedicated to providing you with a range of recycling opportunities that contribute to the sustainability of our environment. The best part is that these programs come to you at absolutely no cost.

Our ongoing support encompasses the following initiatives:

1. Convenient public drop-offs for paper, cardboard, plastic bottles and jugs, glass bottles and jars, and metal cans.
2. Tire recycling services for both residential and illegally dumped tires, benefitting local governments and communities alike.
3. Safe and responsible household hazardous waste collections exclusively tailored for residents within our district.
4. Hassle-free prescription drug drop-offs for the disposal of residentially generated prescriptions.



David Held
Executive Director

As we near the conclusion of 2023, we invite you to actively engage with us by sharing your insights on how we can further elevate the quality of our recycling collection services. Your valuable feedback guides us in refining our processes and enhancing the overall experience.

Should you have any suggestions, thoughts, or questions, please don't hesitate to reach out to us. You can contact me directly at David@timetorecycle.org.

With gratitude for your support,

David J. Held

HELPFUL CONTACTS FOR RECYCLERS

Questions on recycling?

Stark Tuscarawas Wayne Recycling District	330-874-2258
Canton Recycling Center	330-874-2258, option 1

Witness illegal dumping? Call your county's dispatch number!

Stark County Sheriff Dispatch Number	330-430-3800
Tuscarawas County Sheriff Dispatch Number	330-339-2000
Wayne County Sheriff Dispatch Number	330-287-5701



Household Recycling Done Right



1. Contact your recycler to establish the rules for recycling.
2. Identify a location to store your recyclables.
3. Find yourself a few recycling totes to separate your materials. Do your best with the space you have.
4. Start recycling!
5. Remember to rinse out your recyclables. There should be no food or liquids inside your recyclables.



Glass Bottles and Jars Only

- Must be food/beverage grade
- Lids may be placed with the glass
- Recyclables must be clean, dry, and empty of all liquids, juices, foods, or other material

✓ **Acceptable Items:** wine bottles, spaghetti sauce jars, olive oil bottles/jugs, old pop bottles, beer bottles, etc.

✗ **Non-Acceptable Items:** window panes, mirrors, glassware, light bulbs, etc.



Metal Cans Only

- Can be metal, steel/tin, aluminum cans
- Must be food/beverage grade
- Recyclables must be clean, dry, and empty of all liquids, juices, foods, or other material

✓ **Acceptable Items:** vegetable cans, pop cans, cat food cans, etc.

✗ **Non-Acceptable Items:** aluminum or foil food containers, scrap metal, tire rims, metal futons, tools, nails or other construction/demolition materials, engines, or parts of engines, etc.



Do not place your recyclables in a plastic bag inside the bin!

Plastic bags are considered tangles and are not recyclable. These materials get stuck inside the machines at the sorting facilities and cause major delays, drive up costs, and place employees' lives at risk when they must remove them. Do your part by bringing your recyclables loosely in a reusable cardboard box or plastic tote. Dump your recyclables inside the recycling bin and take your cardboard box or plastic tote home for reuse. Like plastic bags, plastic totes do not belong in the recycling and cause delays, drive up costs, and place employees' lives at risk when they must remove them.



Plastic Bottles and Plastic Jugs Only

- Plastic bottle or jug must have a neck and shoulders to be recycled
- Keep your caps on the plastic bottles or jugs
- Plastic bottles and jugs must be clean, dry, and empty

✓ **Acceptable Items:** milk jugs, water bottles, pop bottles, laundry detergent jugs, bleach jugs, etc.

✗ **Non-Acceptable Items:** plastic bags, garbage bags, plastic hampers, laundry baskets, plastic toys, plastic containers with food/liquid waste, plastic kitchen utensils, 5-gallon buckets, plastic bottles or jugs with motor oil or other car related materials in it, styrofoam, etc.



Paper Only

- Paper should be clean and dry
- No foil wrapping paper
- Remove any plastic materials that might be on envelopes if possible

✓ **Acceptable Items:** paperboard materials like cereal boxes and cracker boxes, envelopes, office paper, all magazines, mail, newspapers, copier paper, full-sized construction paper, manila folders, wrapping paper (unless it has non-paper additives like metallic flakes, glitter, and plastics. Foil, metallic and heavily laminated wrapping paper should also be thrown away instead of recycled) etc.

✗ **Non-Acceptable Items:** paper made of foil, plastic coating, ribbons, paper with bows and glitter, paper soiled in glitter or other materials, paper towels, toilet paper, shredded paper, etc.



Flattened/Broken Down Cardboard Only

- Corrugated cardboard only
- Flatten all cardboard
- Remove all Styrofoam and any other material before placing the flattened cardboard into our bins
- Remove any labels or tape if possible

✓ **Acceptable Items:** corrugated cardboard, box cardboard, pizza boxes, etc.

✗ **Non-Acceptable Items:** mat board, paper towels, toilet paper, styrofoam, etc.



SHREDDED PAPER is not recyclable in our recycling bins. Consider donating it to a compost facility or to a local humane society. Otherwise, place it in your trash.



More on Plastic Recycling

This ad was paid for by a generous grant from the Ohio EPA



ATTENTION Recyclers

We Can Do Better!

Not All Plastics Are Recyclable



RECYCLABLE

Plastic Bottles & Jugs ONLY

Clean, Dry, and Empty



Water & Soda Bottles



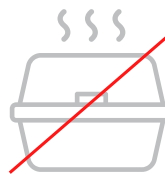
Milk Jugs



Laundry Detergent Jugs and Bleach Jugs



KEEP THESE OUT



NO Food Containers



NO Drink Cups



NO Spray Bottles



Do Not Bag Recyclables (no trash)

When in doubt, leave it out!



For more information on STW's recycling efforts, scan the QR code on your smart phone camera.



Tire Recycling

Wayne County Tire Disposal Program *Appointments Required*

Make your appointment at the Wayne County Health Department by calling 330-264-2426.

WAYNE COUNTY HEALTH DEPARTMENT
203 S Walnut St, Wooster, Ohio 44691

Our tire collection is a free service we provide to residents of Stark, Tuscarawas and Wayne Counties. Residents should make an appointment to dispose of their tires in a safe and environmentally-friendly manner.

Recycling your tires helps keep them off the streets and out of our ditches. Tires that are illegally dumped or exposed to the elements can become a breeding ground for mosquitoes which can carry disease. Make your appointment today!



TIRES ACCEPTED BY THE WAYNE COUNTY HEALTH DEPT.

- We accept all on or off-rim tires for your personal vehicles and home equipment like passenger, light truck, lawn mower, ATV, bicycle, motorcycle, 3-wheeler and 4-wheeler tires.
- Residents are allowed up to 10 tires per person per year.
- By law you may only transport 10 tires or less at a time.
- You must have your ID with you.



TIRES NOT ACCEPTED BY THE WAYNE COUNTY HEALTH DEPT.

- We do not accept tires generated by businesses, churches, governments, non-profits or farms.
- Please call Liberty Tire at 330-868-0097 to dispose of these tires.
- The cost of disposal is the responsibility of these entities and not the Recycling District.

The Canton Recycle Center

By Appointment ONLY



LOCATION: 742 Schroyer Ave SW, Canton, Ohio 44707

The Canton Recycle Center Is BY APPOINTMENT ONLY For All Residents in Stark, Tuscarawas & Wayne Counties

**Not for businesses, governments, commercial entities including apartment complexes, non-profits, or farms.*



Hours of Operation:

Year-Round Collection
Tuesdays & Fridays
from 9am - 3pm.

*Holiday hours and closures
are posted on google.*

APPOINTMENTS:

Make an appointment to recycle your approved materials at the Canton Recycle Center by visiting our website at timetorecycle.org or by calling **330-874-2258, option 1** for a fast and easy experience. We will send you an email confirmation and a text message reminder if you choose!

Acceptable Materials

Household Hazardous Waste Items Accepted at the Canton Recycle Center

- ✓ Acids
- ✓ Adhesives
- ✓ Aerosol Cans



✓ Automotive Products

- Antifreeze
- Auto grease
- Brake fluid
- Gas
- Gas mixtures
- Used motor oil

✓ Batteries

- Automotive
- Rechargeable
NiCad, Li-Ion, Ni-MH
- Lithium primary

✓ Bleach

✓ Caulks

✓ Caustics

✓ Fertilizer

✓ Fungicides

✓ Herbicides

✓ Household cleaners

✓ Kerosene

✓ Light Bulbs

✓ Lighter fluid

✓ Mercury-Containing Devices

Ex: thermometers, thermostats

✓ Oil

- Motor Oil
- Cooking Oil

✓ Paint products

No latex paint - see inset for other options

- Oil-Based
- Solvent-Based
- Stain
- Thinner
- Varnish

✓ Pesticides

✓ Pool chemicals

✓ Solvents



But What Can I Do With Latex Paint?

Look on the back of the paint can for clean-up instructions. Oil-based paints must be cleaned with mineral spirits or paint thinner. Latex paint can be cleaned up with water and soap. We do not accept latex paint - it should be reused or thrown away in your trash after being dried out with kitty litter.



The Canton Recycle Center

The following materials can be collected at the Canton Recycle Center **BY APPOINTMENT ONLY**. Call **330-874-2258, option 1** or visit us online at **timetorecycle.org** to make an appointment.

NOTE: This service is **ONLY** for residents in Stark, Tuscarawas and Wayne counties. **NOT** for businesses, governments, commercial entities including apartment complexes, non-profits or farms.



Looking for **household hazardous waste** recycling info? Check out page 9 for details!

✓ Appliances

Small and large appliances are accepted at the Canton Recycle Center (appointment needed). Freon does not need to be removed from your fridge or other freon containing appliance. No food or other materials may be left inside. The Recycling Center has the right to refuse appliances with any food, liquid or other material inside.



✓ Electronics

All electronics are accepted at the Canton Recycle Center (appointment needed). Do not bring items in a plastic bag – a plastic tote or cardboard box is sufficient. We will return any tote or cardboard box you wish to reuse. If you have a large quantity of items, please keep like items together and do not mix items.

Acceptable Materials



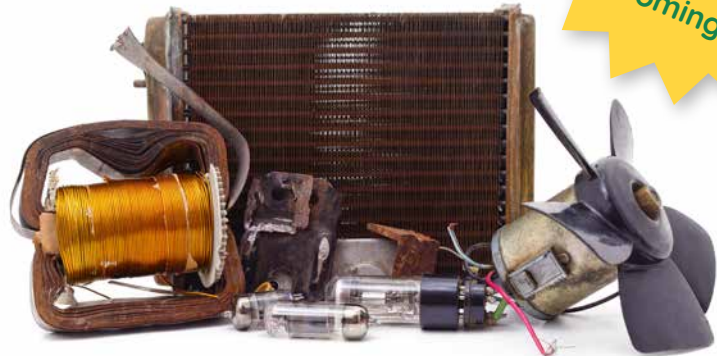
✓ Televisions

Tube-style and flat screen televisions are accepted at the Canton Recycle Center (appointment needed). Tube-style and flat screen televisions will be collected and sent to the landfill, as they are not recyclable. This service is brought to you by the City of Canton.

Don't forget to make an appointment before coming!

✓ Scrap Metal

We accept ferrous (i.e. contains iron) and non-ferrous metals at the Canton Recycle Center by appointment only.



✓ Tires

We accept all tires on or off rim at the Canton Recycle Center (appointment needed) - this excludes agricultural, semi or bus tires. Home equipment tires such as passenger/light truck, lawn mower, ATV, bicycle, motorcycle and 3- and 4-wheelers are acceptable. Residents are allowed to transport 10 tires at a time by law. Must have a valid ID with you.

Hard-to-Recycle Materials



The following hard-to-recycle materials are **NOT acceptable for recycling at the Canton Recycle Center**. Please read under each item for best recycle/disposal practices.

✗ Alkaline Batteries

All alkaline batteries are non-hazardous and may be disposed of in your trash.



✗ Building, Construction & Demolition Materials

Building materials like wood, concrete, lumber, plaster, bricks, shingles, etc. should be donated if they are usable or dispose of them in a landfill. We follow the Ohio EPA's definition of building materials.

✗ Clothing

Gently used clothing may be donated to the Salvation Army or other similar organizations. Otherwise, dispose of your clothing in your curbside trash.



✗ Cylinders

Ex: propane, fire extinguishers or other tanks

- For **propane** recycling instructions, visit bluerhino.com/about/rhino-feed/recycling-tips. Blue Rhino locations offer a free recycling program for 20 lb. grill tanks. If you have a gas grill propane tank that you would like to recycle, write "RECYCLE" on the tank and take it to any Blue Rhino location – they will refurbish it if possible. If the tank does not meet the company's safety and quality standards, they will recycle the tank. Blue Rhino will accept any standard gas grill tank, including other brands.

- **Small propane or butane canisters** for a camp stove, lantern or torch (usually 2 lb. or less) are not refillable and can be recycled through a scrap metal yard. Make sure the canister is empty by attaching it to the device it is used with and allowing the gas to run until it's gone, or use a tool to decompress the item. If there is no scrap metal recycling available, and all the gas is released, the canister may be discarded in the trash. Refrigerant gas, welding tanks and medical cylinders should be disposed or recycled through the company it was purchased or received.
- **Empty helium balloon tanks** that were purchased from a retail store should be punctured and recycled at a local scrap metal yard. You may receive a rebate. Follow the disposal instructions that came with the tank or see these instructions from Balloon Time at balloontime.com/how-to/recycle. Helium tanks are not accepted in the household hazardous waste disposal program.
- **Medical cylinders** should be disposed of or recycled through the company they were purchased or received. Check with your medical supplier for details about their takeback or exchange program. If you are unable to determine where the oxygen tank came from, recycle the tank at a scrap metal yard near you. Determine if the tank is aluminum or stainless steel. Find a scrap metal yard by visiting timetorecycle.org. Call ahead to confirm that they accept stainless steel or aluminum tanks and what their requirements are.

✗ Explosives

Contact your local police department to report explosives that are found and/or how to properly dispose of these items.



✗ Furniture & Carpet

Check with your waste hauler to see if there is an extra charge to take furniture to the landfill. If they don't have a process or do not take the items, visit timetorecycle.org for a list of landfills in your area.

✗ Mattresses

Mattresses may require special preparation. Call your waste hauler first to see what they require to safely pick this item up.

✗ Plastic Bags

Check with your local retailer or grocery store to see if they collect and recycle plastic bags. If not, throw them away in your trash.

✗ Prescription Pills, DEA Regulated Material and Bio-Medical Waste

Many police departments in your area have prescription drug drop offs. Visit timetorecycle.org to find a pill drop off near you. Biomedical waste must always be disposed of properly. Contact your local health department for recommendations for disposal of sharps, or any other bio-medical waste material.

✗ Smoke Detectors

A smoke ionization detector can be returned to the manufacturer for proper disposal, or you can legally dispose of it in the regular trash. Manufacturers of smoke detectors are mandated by Nuclear Regulatory law 10 CFR 32.27 to see

that the radioactive waste is disposed at a nuclear waste disposal facility. When sending back a smoke detector, do not take it apart. Return the entire smoke detector by ground mail (not air mail). Before shipping, remove the batteries and place them in the trash. No special packaging is needed for your smoke detector – put it in a box, consider adding some newspaper for padding, and send it. You must call the company before sending. If you are unable to return a smoke detector to the manufacturer, place it in the regular garbage for disposal. Smoke detectors are not accepted in our hazardous waste disposal program.

Common Smoke Detector Manufacturers:

Kidde/Firex – 800-880-6788 ext. 1

First Alert/BRK – 800-323-9005, ext. 2

Honeywell – 800-328-5111

✗ Tires: Tractor, Bus & Other Agricultural, Business, Commercial, Church or Non-Profit Group

Contact Liberty Tire (Stark County) at 330-868-0097 for disposal information for these tires. There will be a cost for the disposal.

✗ Toys

Consider donating gently used toys to a Goodwill or Salvation Army near you for reuse, or dispose of your toys in the regular trash.



✗ Trash

Dispose of your trash in your curbside waste or contact a local hauler for special requests.

✗ Yard Waste

Yard waste sites are available in Stark, Tuscarawas, and Wayne Counties. Please see the list of local yard waste collection sites on page 14.

What to Do With Yard Waste

List of Sites Open to Residents

Call the local community for days and hours of operation. **Residential only - no business/commercial.**

Brewster

145 ½ First St. SW, Brewster, OH, 44613

Canton Township

4711 Central Ave. SE, Canton, OH, 44707

Nimishillen Township

4915 N Nickelplate St., Louisville, OH, 44641

Perry Township

1500 Jackson Ave. SW, Massillon, OH, 44646

Dennison Village

20 Welch St., Dennison, OH, 44621

Lawrence Township

10867 Industrial Pkwy. NW, Bolivar, OH, 44612

City of Dover

100 North Tuscarawas Ave., Dover, OH, 44622



List of Sites Open to Businesses, Commercial Entities, and Residents

Call the business for days and hours of operation. Charges may apply.

Paradise Compost

4300 Mechanicsburg Rd., Wooster, OH, 44691

Bull Country Compost

10316 Kohr Rd. NW, Dundee, OH 44624

Earth 'n Wood

5335 Strausser St. NW, North Canton, OH 44720



What do these sites accept?

The above sites accept leaves, grass trimmings, brush, wood chips, and shrub/tree trimmings. Yard waste should not include roots or stumps that exceed six inches in diameter.

Recycling Drop-Off Sites

 All locations open down to dusk unless noted

ACCEPTED MATERIALS:

Paper, Flattened Cardboard, Plastic Bottles & Jugs, Glass Bottles & Jars, and Aluminum/Metal Cans Only

Site Name	Description	Address
Baughman Township	Baughman Township Trustees	3470 Mount Eaton Rd., Orrville, Ohio 44667
Chester Township	Northwestern Elementary School	7334 N. Elyria Rd., West Salem, Ohio 44287
Chippewa Township	Galehouse Lumber Storage Building	14065 Galehouse Rd., Doylestown, Ohio 44320
City of Orrville	Buehler's Fresh Foods (behind store)	1114 W. High St., Orrville, Ohio 44667
City of Wooster	Buehler's Fresh Foods (behind store)	3540 Burbank Rd., Wooster, Ohio 44691
East Union Township	East Union Township	3474 S. Apple Creek Rd., Apple Creek, Ohio 44606
Franklin Township	Franklin Township	132 W. Moreland Rd., Wooster, Ohio 44691
Milton Township	Milton Township	13985 Kauffman Ave., Sterling, Ohio 44276
Paint Township	Paint Township Garage	10075 Winesburg Rd., Mt. Eaton, Ohio 44659
Plain Township	Plain Township Garage	3026 S. Elyria Rd., Wooster, Ohio 44691
Village of Congress	Village of Congress Service Center	133 N. Maple St., West Salem, Ohio 44287
Village of Creston	Creston Village Garage	150 Factory St., Creston, Ohio 44217 * Mon - Fri: 7am - 7pm, Sat: 9am - 12pm
Village of Dalton	Dalton Service Garage	47 N. Freet St., Dalton, Ohio 44618
Village of Fredericksburg	Fredericksburg Elementary School	160 W. Clay St., Fredericksburg, Ohio 44627
Village of Kidron	Lehman's Hardware Store (behind store)	4779 Kidron Rd., Dalton, Ohio 44618
Village of Smithville	Smithville Community Recycling	736 E. Main St., Smithville, Ohio 44677
Village of West Salem	Street Garage	115 S. Main St., West Salem, Ohio 44287
Wayne Township	Wayne Township Maintenance Garage	5277 Cleveland Rd., Wooster, Ohio 44691
Wooster Township	OARDC Feed Mill - OSU (behind feed mill)	2605 Selby Rd., Wooster, Ohio 44691
Wooster Township	Valley College Grange	2411 Shreve Rd., Wooster, Ohio 44691

Look for this handy signage at some of our drop-off sites.

Did You Know?

Recycling cardboard uses 75% less energy than making new cardboard.
- Roadrunner

ITEMS NOT ACCEPTED AT THIS SITE
RC. 3767.32



- NO TRASH
- NO CLOTHING
- NO TVs OR ELECTRONICS
- NO FURNITURE OR CARPET
- NO APPLIANCES
- NO PLASTIC BAGS
- NO TIRES
- NO HAZARDOUS WASTE OR PAINT
- NO YARD WASTE
- NO TOYS
- NO BUILDING MATERIALS
- NO MATTRESSES
- NO CAR SEATS
- NO HOSES
- NO CHRISTMAS LIGHTS
- NO ELECTRICAL CORDS
- NO PROPANE TANKS
- NO STYROFOAM



RECYCLING DISTRICT

PRSR STD
US POSTAGE
PAID
KENT OH
PERMIT #15

*****ECRWSEDDM*****

Residential Customers

Board of Directors



Janet Weir Creighton
Stark County Commissioner



Chris Abbuhl
Tuscarawas County Commissioner



Ron Amstutz
Wayne County Commissioner



Richard Regula
Stark County Commissioner



Greg Ress
Tuscarawas County Commissioner



Jon Hofstetter
Wayne County Commissioner



Bill Smith
Stark County Commissioner



Kristin Zemis
Tuscarawas County Commissioner



Sue Smail
Wayne County Commissioner

We are committed to offering you exceptional service while ensuring that recycling remains accessible and user-friendly.

timetorecycle.org • 1-800-678-9839



Printed on 33% Recycled Paper